

Siemens Healthcare GmbH, HC DI CT QT, Siemensstr. 1, 91301 Forchheim

To all users of the

**SIEMENS SOMATOM Definition AS**  
**SIEMENS SOMATOM Definition DS**  
**SIEMENS SOMATOM Definition Edge**  
**SIEMENS SOMATOM Definition Flash**  
**SIEMENS SOMATOM Force**

Name	Dr. Markus Nagel
Department	HC DI CT QT
Telephone	+49 (0)9191 18-7231
E-mail	markus.nagel@siemens-healthineers.com
Date	October 26, 2017

## Customer Safety Advisory Notice CT053/17/S

**Re: CARE Dose4D algorithm – Risk of unnecessary radiation exposure for head scans based on p.a./a.p. topograms**

Dear customer:

This letter is to inform you about a potential risk of unnecessary radiation exposure due to a software issue we found in the CARE Dose4D algorithm implemented in the Siemens Healthineers CT scanners specified above.

### **When does this malfunction occur and what is the problem?**

Siemens Healthcare became aware of possible incorrect tube current calculations by the CARE Dose4D algorithm for head scans based on p.a. (posterior-anterior) or a.p. topograms. Depending on the geometrical shape of the skull bone, it may happen in rare cases that the calculated dose distribution is not appropriate. Potentially, the CARE Dose4D software will select the maximum tube current for the uppermost part of the skull, thus leading to unnecessary radiation exposure.

### **How can the operator help to avoid a potential risk of the system?**

The described issue will not occur when using a lateral topogram instead of a p.a. or an a.p. topogram. Accordingly, we strongly recommend using topograms in lateral position for all head scans.

The following section describes how you can recognize a possible miscalculation of the tube current when still using a p.a. or an a.p. topogram and how to correct it prior to starting the scan:

The calculated mAs profile (= dose profile) of the planned scan range is displayed after performing the topogram on the left side of the screen (Fig. 1).

Any unusual dose distribution similar to the graph reflected in Fig. 1 indicates a possible malfunction of the CARE Dose4D algorithm. The very sudden and strong increase of the tube current in the upper part of the skull is easily recognized (Fig. 1, red rectangle).

In case the operator becomes aware of the described behavior of the system, the scan should not be started. If the dose distribution appears to be incorrect, please run a new lateral topogram and check the dose distribution again!

**Siemens Healthcare GmbH**  
Management: Bernhard Montag, Chairman;  
Thomas Rathmann, Michael Reitermann

Siemensstr. 1  
91301 Forchheim  
Germany

Tel.: +49 (9191) 180  
siemens.com/healthcare

Chairman of the Supervisory Board: Michael Sen  
Registered office: Munich, Germany; Commercial Registry: Munich, HRB 213821  
WEEE-Reg.-No. DE 64872105

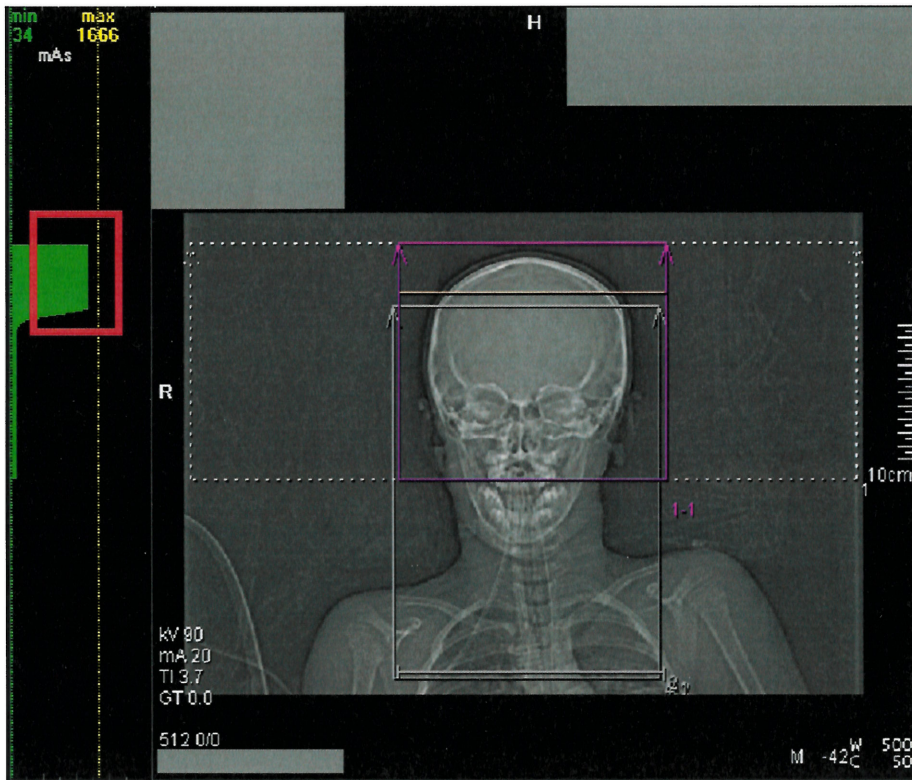


Fig. 1 Topogram with calculated mAs profile

The following part describes additional safety features already implemented in current systems:

To prevent any possible deterministic radiation effects on the patient's skin or eye lenses, Siemens Healthcare implemented a dose alert according to the technical standard IEC 60601-2-44. A warning will be shown and has to be confirmed by the user if the accumulated CTDIvol for the ongoing examination exceeds the alert threshold in any z-position. The default setting for the threshold is adjusted to 1000 mGy.

Furthermore, the user can configure dose notification thresholds for every scan range (please refer to the "Instructions for Use", chapter 9 "Dose management and optimization", subchapter 9.1.1 "Dose Notification"). If a dose notification threshold is configured and is bound to be exceeded, a notification requesting a confirmation by the user pops up prior to the scan (Fig. 2)

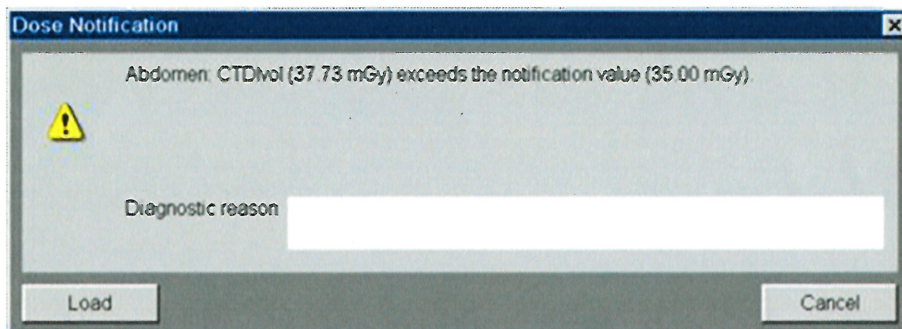


Fig. 2 Pop up window "Dose Notification" in case a configured threshold is exceeded

**How this issue will be solved**

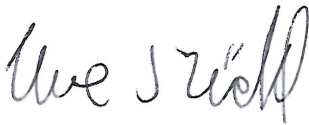
Our experts will develop a solution to correct the problem with top priority. As soon as we release the correction, we will inform you concerning the start of the measure and when this correction has been successfully implemented.

We appreciate your understanding and cooperation with this safety advisory notice and ask you to immediately instruct your personnel accordingly. Please ensure that this safety advisory notice is placed in the medical device's Instructions for Use. Your personnel should maintain awareness until a solution has been implemented.

If you have sold this medical device and it is no longer in your possession, we kindly ask you to forward this safety advisory notice to the new owner of this device. Please also inform us about the new owner of the device.

- The relevant national competent authority has been informed of this notice.

Sincerely yours,



Uwe Rückl  
Head of Research & Development CT  
Computed Tomography  
Siemens Healthcare GmbH  
Forchheim  
Germany



Dr. Markus Nagel  
Head of Quality&Technology CT  
Computed Tomography  
Siemens Healthcare GmbH  
Forchheim  
Germany

Definit./AS/Edge/Flash/Force

# Update Instructions

## Safety Update - CT053/17/S

### CUSTOMER SAFETY ADVISORY NOTICE

Update within deadline 3 months

Mandatory  Yes  No

Affected  Warranty  Contract  Others

Update by  Customer  Informatics  RSC  Apps  CSE

Remote update  Yes  No

Intranet download available  Yes  No

Update material required  Yes  No

Material free of charge  Yes  No  No, credit if returned

Return of parts  Yes  No

Application training needed  Yes  No  Recommended

Application training time 0 h

Estimated completion time 0,25 h Number of CSEs: 1

**Remarks: This Update requires the download, print-out and distribution of a Customer Safety Advisory Letter CSAN. See sections 1-2 for details.**

#### Scope

Material number	7740769, 8098027, 10430603, 10590000, 10742326
Software version	n.a.
Related to customer advisory letter	667492-EAE-01S-01

Change reference no.: 667492  
 Name: S. Reiche  
 Department: HC SV CS SLM CT



## Document Version

Siemens reserves the right to change its products and services at any time.

In addition, manuals are subject to change without notice. The hardcopy documents correspond to the version at the time of system delivery and/or printout. Versions to hardcopy documentation are not automatically distributed.

Please contact your local Siemens office to order a current version or refer to our website <http://www.healthcare.siemens.com>.

## Disclaimer

Siemens provides this documentation "as is" without the assumption of any liability under any theory of law.

The content described herein shall be used by qualified personnel who are employed by Siemens or one of its affiliates or who are otherwise authorized by Siemens or its affiliates to use such documents.

Assemblers and other persons who are not employed by or otherwise directly affiliated with or authorized by Siemens or one of its affiliates are not entitled to use this documentation without prior written authority.

## Copyright

"© Siemens, 2017" refers to the copyright of a Siemens entity such as:

Siemens Healthcare GmbH - Germany

Siemens Aktiengesellschaft - Germany

Siemens Shenzhen Magnetic Resonance Ltd. - China

Siemens Shanghai Medical Equipment Ltd. - China

Siemens Healthcare Private Ltd. - India

Siemens Medical Solutions USA Inc. - USA

Siemens Healthcare Diagnostics Inc. - USA and/or

Siemens Healthcare Diagnostics Products GmbH - Germany

<b>1</b>	<b>Preparation</b>	<b>4</b>
1.1	General Information	4
1.1.1	Systems/Products Affected	4
1.1.2	Reason for the Update	4
1.1.3	Prerequisites	4
1.1.4	Special Tools	4
1.2	Material Information	5
1.2.1	Ordering Information	5
1.2.2	Preparations for Intranet Download	5
1.2.3	Return of Parts	5
<b>2</b>	<b>Update</b>	<b>6</b>
2.1	Work Steps	6
2.1.1	Final Check	6
2.1.2	Final Work Steps	6
2.1.3	Customer Information	6
2.1.4	Changes to Previous Version	6
<b>3</b>	<b>Completion Protocol CT053/17/S</b>	<b>7</b>
3.1	CUSTOMER SAFETY ADVISORY NOTICE	7
3.1.1	Reason for the Update	7
3.1.2	Protocol	7
<b>4</b>	<b>List of Hazard IDs</b>	<b>8</b>

## 1.1 General Information

### 1.1.1 Systems/Products Affected

See page 1.

The list of affected systems is not part of these Update Instructions.

Obtain the material and serial numbers from your local Update Management or Dispatch.

### 1.1.2 Reason for the Update

Distribution of customer safety advisory notice (CSAN).

This update is in conjunction with: Customer Advisory Notice CT053/17/S DocLink - 667492-EAE-01S-01

### 1.1.3 Prerequisites

The latest version of this document can be found in the Services Knowledge Base (SKB).

### 1.1.4 Special Tools

n.a.

## 1.2 Material Information

### 1.2.1 Ordering Information

n.a.

### 1.2.2 Preparations for Intranet Download

The required file: "**Customer Advisory Notice CT053/17/S**" has to be downloaded from the Siemens Healthcare Intranet -> Customer Services.

- Go to (→ Product Information, <https://productinformation.healthcare.siemens.com/>)
- Follow the path:  
**CT -> Software Download -> UIs 2017**
- Click the left mouse button on the file to be downloaded: "Customer Advisory Notice CT053/17/S"
- Save the file on the hard drive D:\...
- When finished saving close the window

### 1.2.3 Return of Parts

n.a.



## 2.1 Work Steps

- Open the zip file "Customer Advisory Notice CT053-17-S.zip".
- Select the customer advisory notice in the correct language and print it out.  
The local update management may want to add a personalized cover sheet.
- Send the letter to the customer via certified mail and with a prove of delivery.  
(The reception needs to be acknowledged.)
- When you have received the prove of delivery report the update.  
See Final Work Steps.

### 2.1.1 Final Check

n.a.

### 2.1.2 Final Work Steps

- The update has to be reported by authorized employees, either via:
  - Automated data transfer (only in countries connected to SAP via an Update Handling Interface)
  - The " Update Handling " on the Siemens Healthcare Intranet/Extranet -> Customer Services application (for countries NOT connected to SAP via the Update Handling Interface)
  - the Completion Protocol (for countries that do not have one of the connections indicated above)



The update is not considered to have been performed until the IVK structure in the Installed Base is updated.

### 2.1.3 Customer Information

n.a.

### 2.1.4 Changes to Previous Version

n.a.

### 3.1 CUSTOMER SAFETY ADVISORY NOTICE

#### 3.1.1 Reason for the Update

Distribution of customer safety advisory notice (CSAN).

#### 3.1.2 Protocol

This update has been completed successfully. The customer was informed of the solution to the "Customer (Safety) Advisory Notice": **CT053/17/S (667492-EAE-01S-01)**.

Customer: .....

Customer No.: ..... Func. Location .....

Material No. Serial number  
of the system: ..... of the system: .....

Notification: .....

Remark: .....

Remark: .....

Country: ..... Site: .....

Performed by: ..... Telephone: .....

Date: ..... Signature: .....



File the protocol in the corresponding binder.

There are no Hazard IDs in this document.

- Restricted - All documents may only be used by authorized personnel for rendering services on Siemens Healthcare Products. Any document in electronic form may be printed once. Copy and distribution of electronic documents and hardcopies is prohibited. Offenders will be liable for damages. All other rights are reserved.

[healthcare.siemens.com/services](http://healthcare.siemens.com/services)

Siemens Healthineers Headquarters  
Siemens Healthcare GmbH  
Henkestr. 127  
91052 Erlangen  
Germany  
Telephone: +49 9131 84-0  
[siemens.com/healthineers](http://siemens.com/healthineers)

Print No.: CT00-000.897.98.01.02 | Replaces: n.a.  
Doc. Gen. Date: 10.17 | Language: English  
© Siemens Healthcare GmbH, 2017

**[siemens.com/healthineers](http://siemens.com/healthineers)**