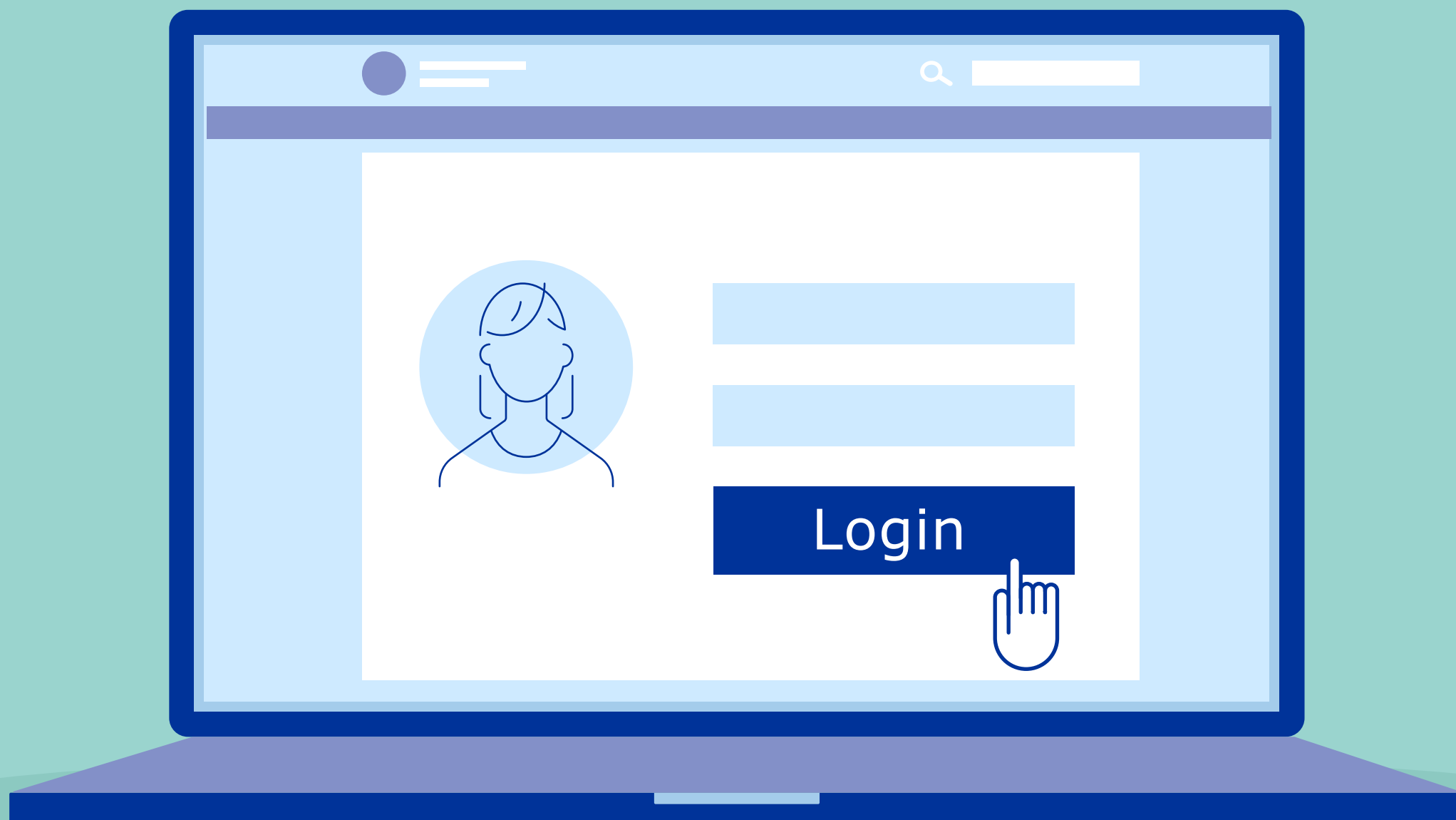


Kako možete registrirati svoju **jedinstvenu kontaktnu točku industrije (i-SPOC)** za opskrbu i dostupnost lijekova?



#iSPOC

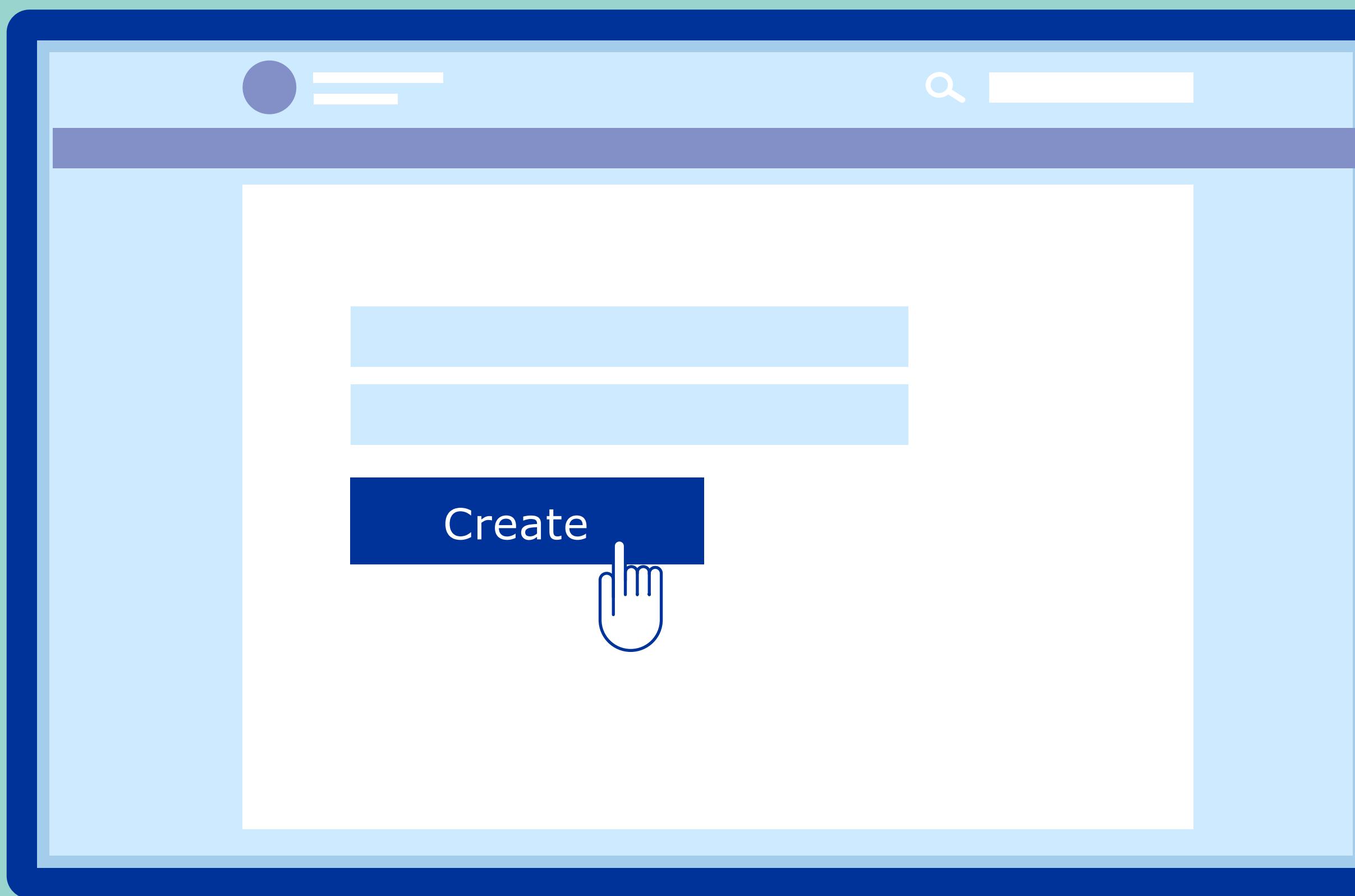


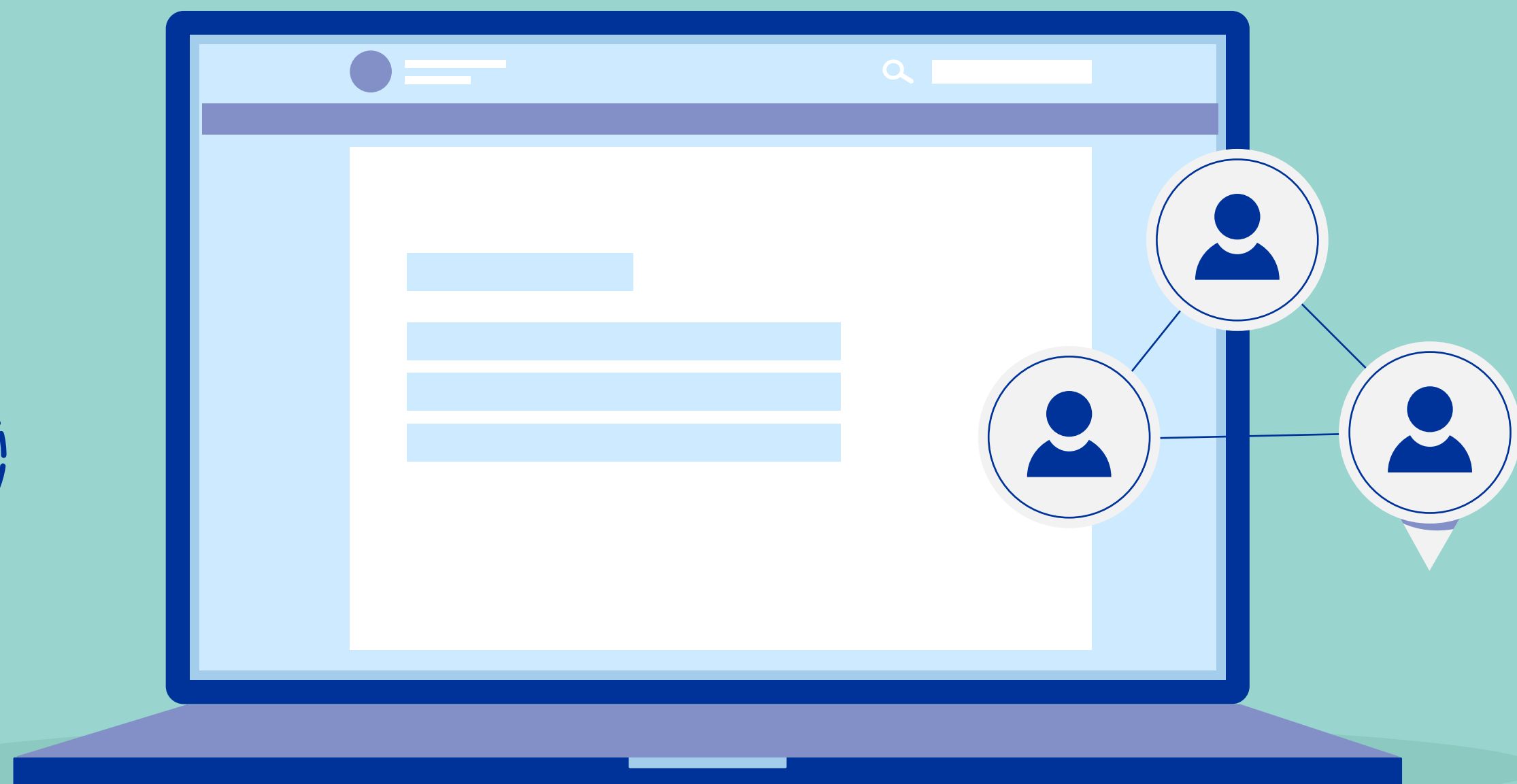
1

Prijavite se u **IRIS portal** pomoću podataka EMA korisničkog računa.

Odaberite "Submission" i
odaberite "**Create new
submission**".

2



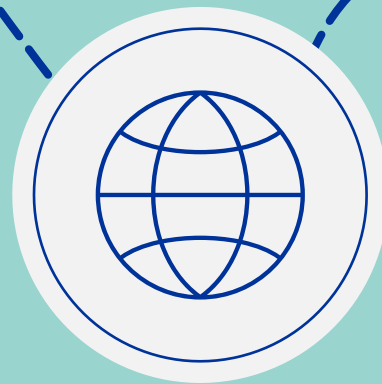


3

Odaberite opciju
"Organisation" i unesite
odgovarajuće informacije u
rubriku "**Submission type**".

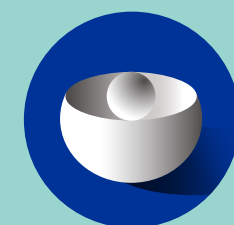
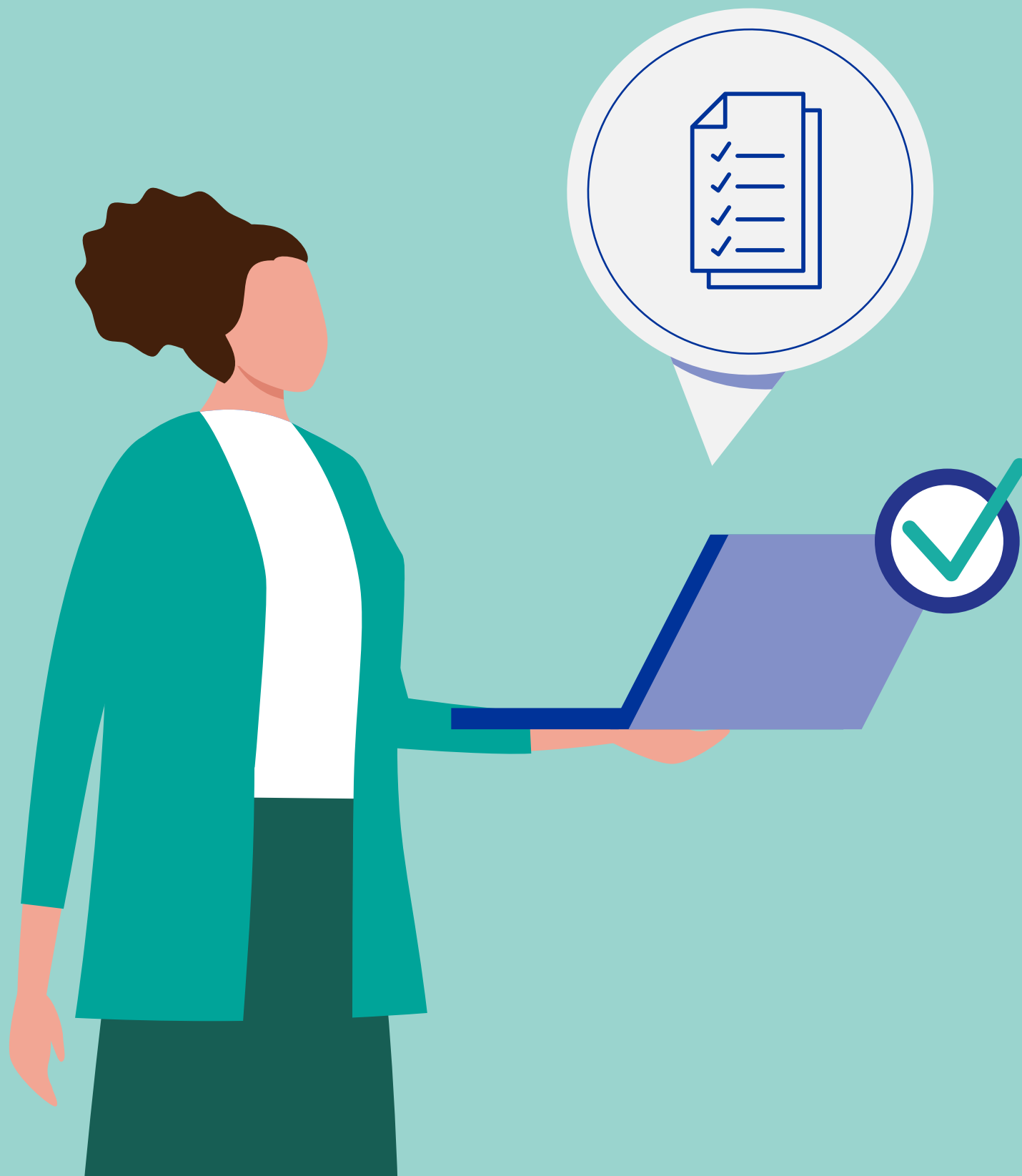
Odaberite organizaciju.
Pretražite i odaberite i-SPOC.
Unesite i potvrdite kontakt podatke i-SPOC-a.

4



Pregledajte i-SPOC sažetak i provjerite je li registracija bila uspješna.

5



EMA

EUROPEAN MEDICINES AGENCY